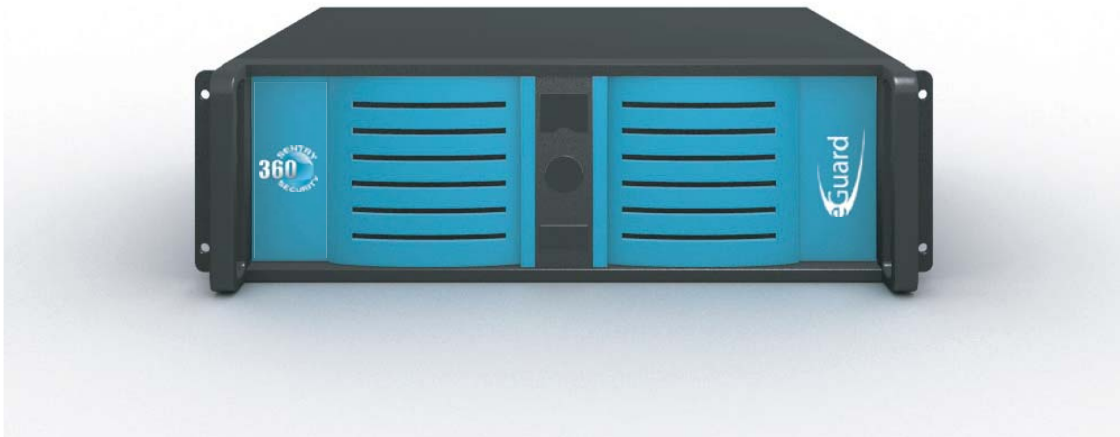


eGuard Video Recorder

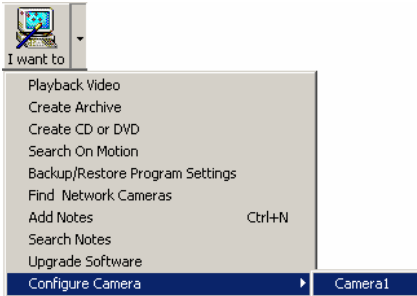
Network (IP) Camera Configuration



Network (IP) Camera Configuration

Network (IP) cameras are normally configured based on the camera manufacturer's specifications. This is done through a "browser" interface. Some of the typical settings are user name, password, IP address and port number. Please read the manufacturers setup information. eGuard Video Recorder has the ability to connect to the camera manufacturers configuration page through the camera settings wizard "Link" button.

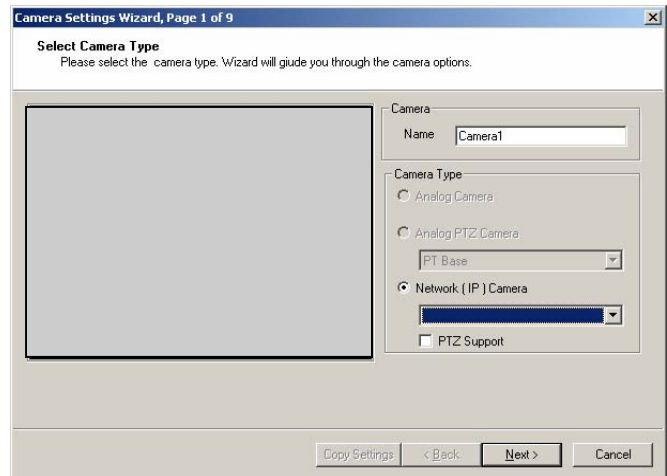
Step 1



To enter the set up information for an IP Camera, Click on the 'I want to' button on the top toolbar. Select 'Configure Camera' and click on 'Camera1'. This will open the 'Camera Settings Wizard' which will guide you through the configuration process.

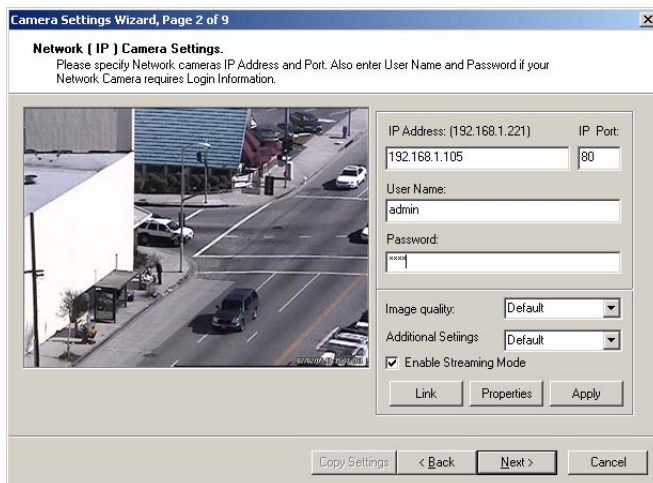
Step 2

Enter the camera name and type on the first page. Select the brand of network camera being used from the 'Network (IP) Camera' drop down list. Check 'PTZ Support' if the network camera has pan-tilt-zoom capabilities.



Click 'Next' to continue setup

Step 3



Enter the **IP address** and **IP Port** for the network camera. The Port is typically dependant on the cameras manufacturer. Enter the **User Name** and **Password** if your network camera requires login information and click 'Apply'.

The camera should now appear in the window at the left of the settings. If the camera does not appear click on the 'Link' button and make sure you can view the camera in manufacturer's configuration browser page.

Click 'Next' to continue setting up additional features like Brightness & Contrast, Recording options, Alarm options and Motion Detection. Complete the Camera settings on Page nine by clicking the 'Finish' button.

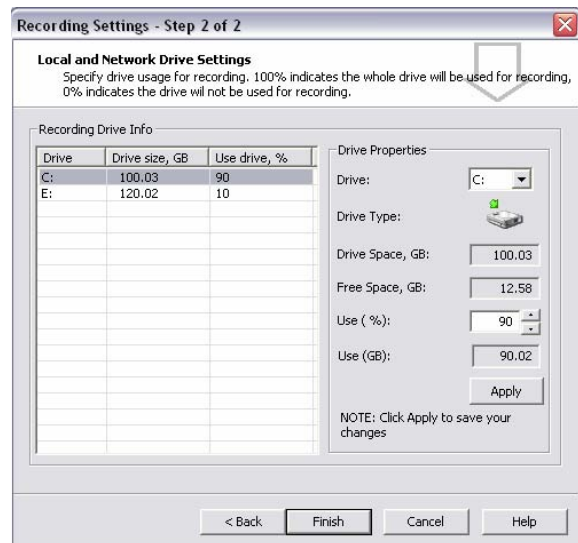
Network (IP) Camera Configuration Additional Configuration

Recording

When eGuard software is installed, it detects all hard drives on the server and the total space available on those drives. By default the system will use 95 percent of the C drive for recording. All subsequent drives are set to 0% and not used by default. If other data is on the C drive, such as operating system, programs, etc. the resulting space for recording is reduced. It is important to use less than 100% of the C drive because windows requires and uses free space. Subsequent drives can be set to 100% usage.

To set up Recording parameters, select the **Setup** Button from the Main Toolbar and then select the **Recording Settings** option. Page one of the Wizard configures recording type and quality. Page two configures the percentage of which drives to record to. To use a hard drive for recording, set the desired percentage and press the Apply button. Mapped network drives may also be used for recording.

To start recording, select the **Record** Main Toolbar button.

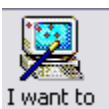


Remote Access

Enter a new system password.. This is the password used by the remote application to access this system. To change System Password, select the **Setup** Button from the Main Toolbar and then select the **Change System Password** option. Leave the Old Password Blank.

To change Remote Connection parameters, select the **Setup** Button from the Main Toolbar and then select the **Remote Access Settings** option.

Finally, to allow Remote access press the **Remote** Main Toolbar button. You will see "IP Connections Enabled" in the Status Window.



"I Want To..." Toolbar Button

The major program features can be accessed using the **"I Want To..."** Main Toolbar button. Selecting an option from the resulting menu will open the appropriate wizard to guide you through all of the steps.